

UNIVERSITY OF THE WEST INDIES
CAVE HILL CAMPUS

Department of Computer Science, Mathematics & Physics

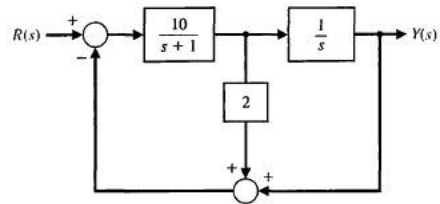
ELET3220 - Control Systems

Class Test 2

26 November, 2020

SHOW STEPS FOR ALL SOLUTIONS

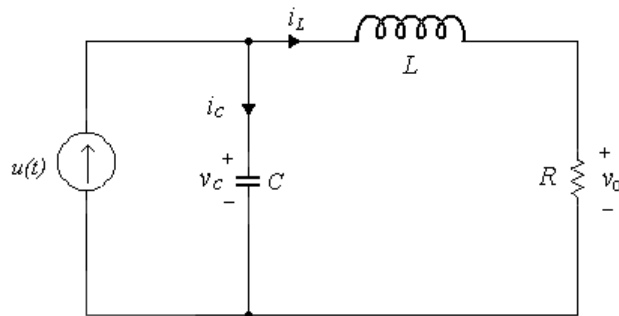
1. For the control system below



Find the Transfer Function

[6]

2. For the circuit below



Find a suitable State Variable Model in the form of

$$\dot{x} = Ax + Bu; \quad y = Cx \quad [4]$$

Then find the transfer function from it

[4]

2. For the Signal Flow Graph below, find the transfer function

[6]

